

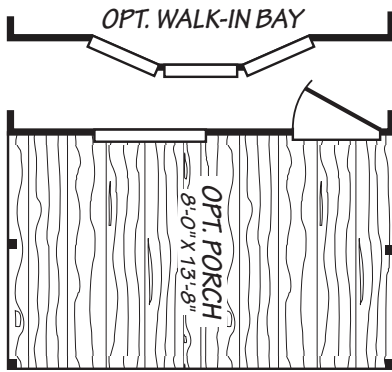
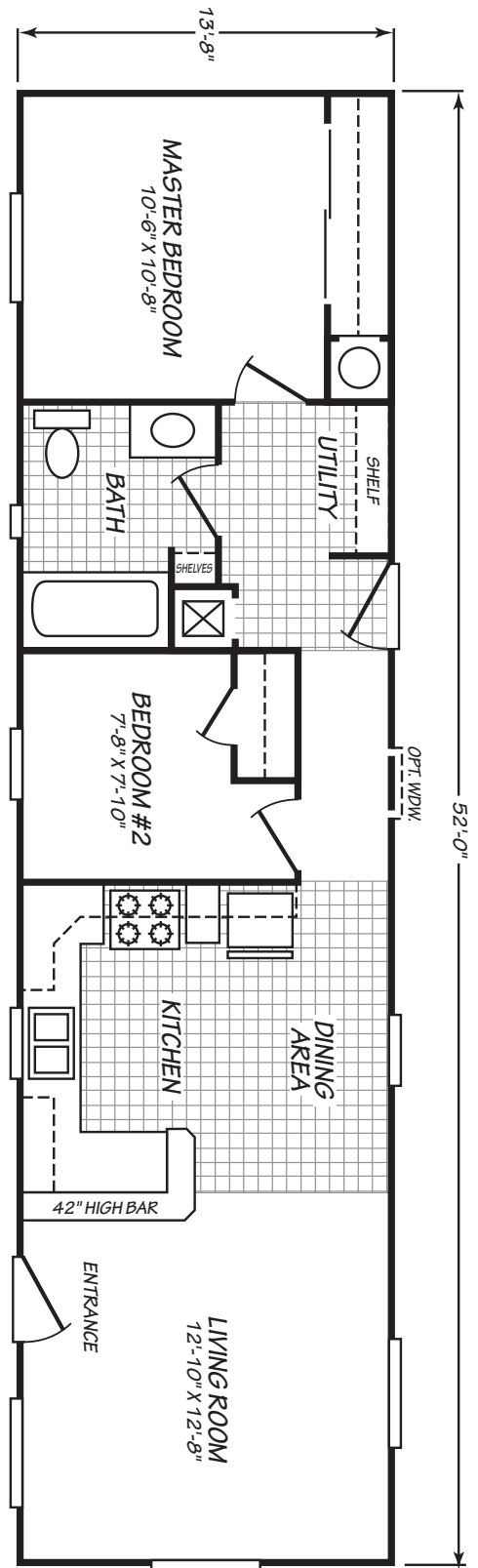
# Trinidad

Weston Super Value Series



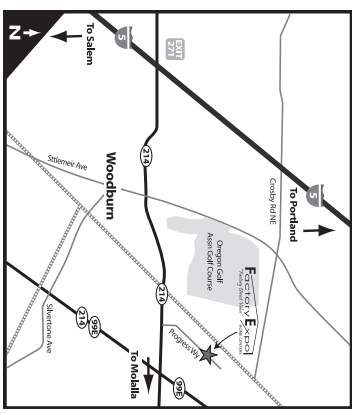
2 Bedroom, 1 Bath  
Approx. 710 Sq. Ft.

Last Updated: 1-23-19



I authorize Factory Expo Home Centers to build my house, per this plan.  
 \_\_\_\_\_  
 X  
 \_\_\_\_\_  
 Customer Signature/Date

**Factory Expo**  
 "Factory Direct Pricing"  
 HOME CENTERS  
 2555 Progress Way • Woodburn, OR 97071



Important: Due to our policy of continual improvement, all information in our brochures may vary from actual home. The right is reserved to make changes at any time, without notice or obligation, in colors, materials, specifications, processes, and models. All dimensions and square footage calculations are nominal and approximate figures. Please check with your local sales associate for specific and current information.

For Detailed Directions See Map On Our Website  
**1-800-889-8548**